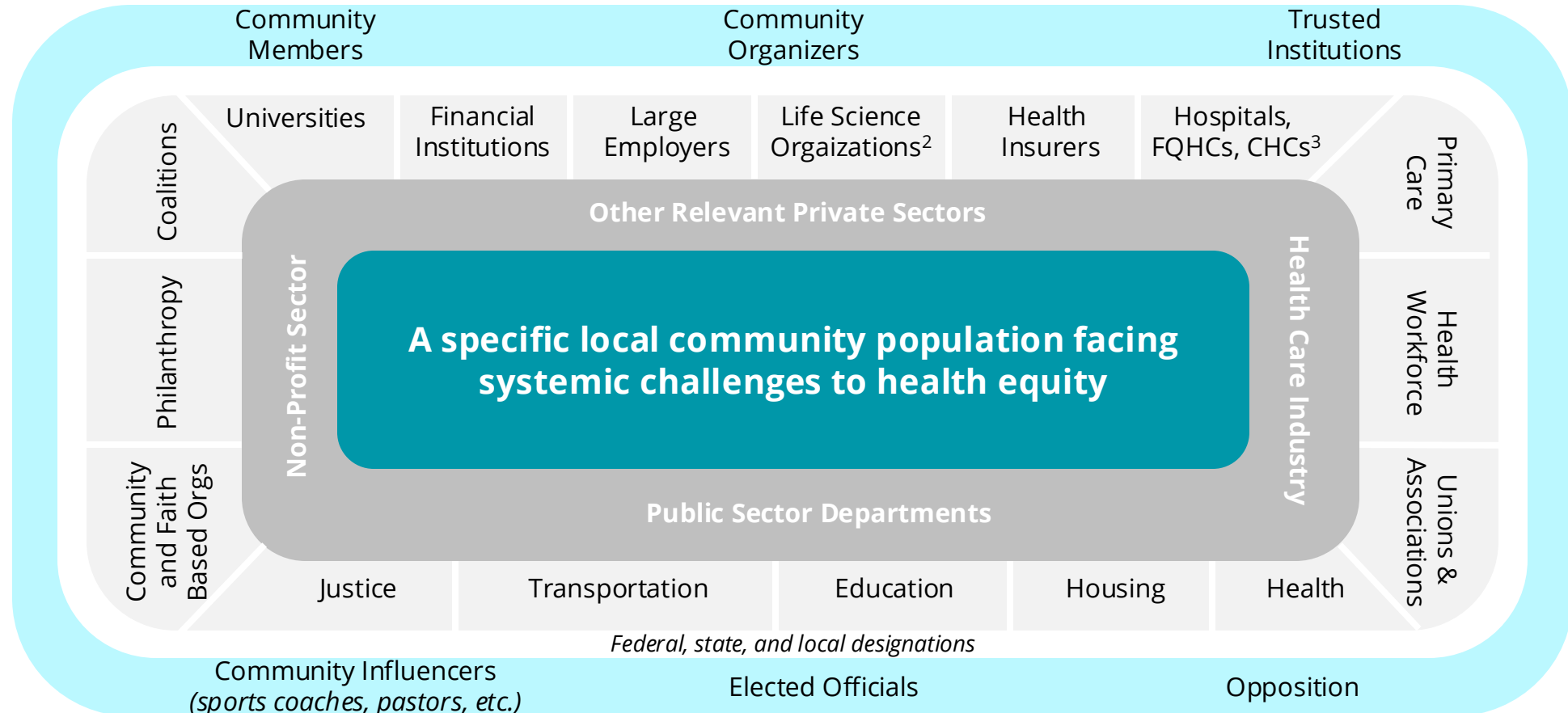


Local Health Ecosystem Mapping

Mapping and understanding the array of diverse actors and each of their perspectives or roles in a community health ecosystem is key to collaboration and ultimately, to advancing health equity.

EXAMPLES of Key Actors Influencing Local Health Equity Today¹



Some toolkits that might help to identify additional partners: [Ecosystem Mapping Tool](#), [Vision Network Labs Patterns in Partnering across Public Health Collaboratives](#), [AHA/ACHI Community Engagement](#).

1. This ecosystem map is illustrative and **not intended to be fully exhaustive**. It's important to think holistically and to consider groups, sectors, or actors that may be missing from current collaborations in order to more strategically advance a common mission of equity.

2. [Life sciences](#) includes companies operating in the research, development and manufacturing of pharmaceuticals, biotechnology-based food and medicines, medical devices, biomedical technologies, nutraceuticals, cosmeceuticals, food processing, and other products that improve the lives of organisms

3. FQHC: Federally Qualified Health Centers, CHC: Community Health Centers

Sample Exercise: Map the actors within your Local Health Ecosystem

How to Use: Use this blank template as a starting point to populate and understand your own local health ecosystem. Consider both formal community health organizations, public and private sector players, as well as informal players that influence community health, such as bodegas and gathering places like churches and salons.

Key Actors Influencing Local Health Equity Today



Some toolkits that might help identifying additional partners include: [Ecosystem Mapping Tool](#), [Vision Network Labs Patterns in Partnering across Public Health Collaboratives](#) and [AHA/ACHI Community Engagement](#).