



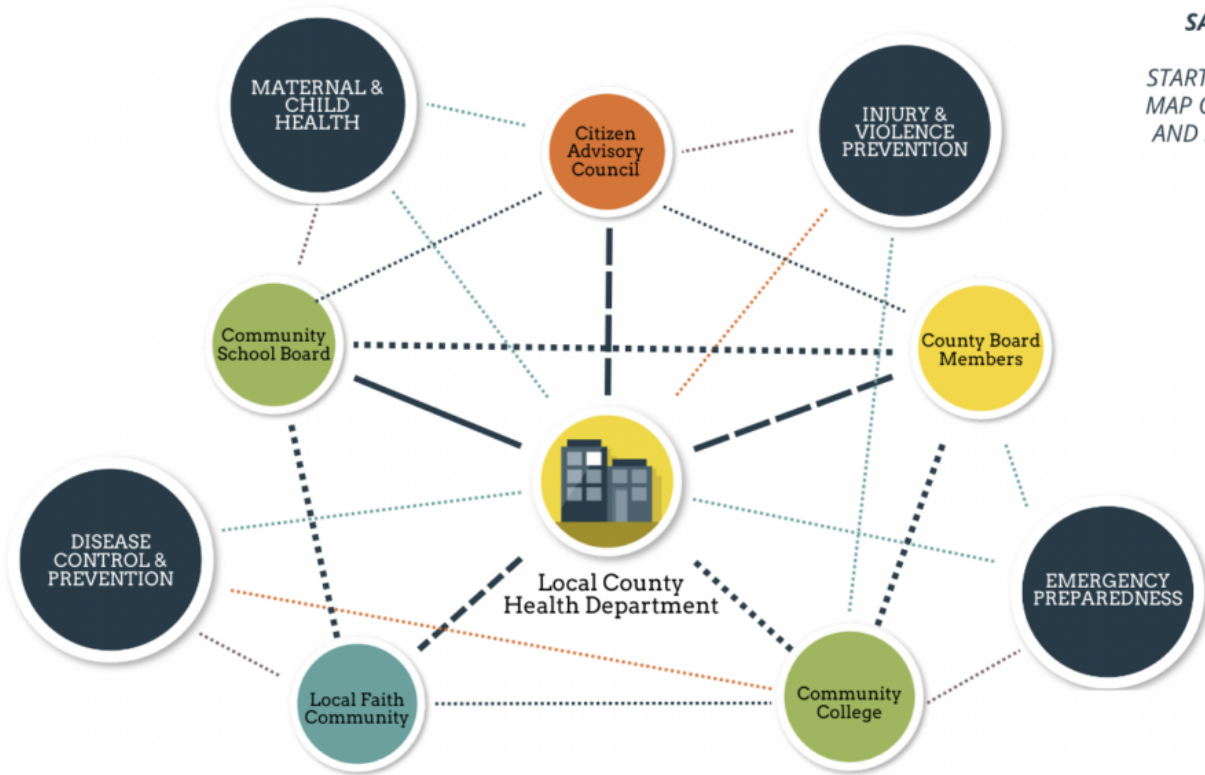
# Ecosystem Mapping Template

Use this template to identify the people, organizations, and communities in your ecosystem and visualize how they are interconnected. Copy and paste the elements below to build your map on the right.

- **First, use the nodes below to identify all the stakeholders in your community related to your issue of focus.** Label each node to keep track. Use colors or node symbols to show how organizations differ by focus area, sector, or target audiences.
- **Second, draw lines or arrows between organizations to show their connections.** You can copy the template and make several versions of your map to show how they are connected differently.
- **Third, analyze your map by asking questions.** Who is connected to whom? Where are gaps or opportunities for new connections? How are shared resources, information, and data flowing?
- **Repeat the mapping process regularly.** Track how your ecosystem evolves dynamically over time.

## Ecosystem Mapping Components

Copy & paste these elements to build your map.



## SAMPLE MAP!

START USING THIS MAP OR DELETE IT AND START FROM SCRATCH.

## SAMPLE Ecosystem Map: The Local Public Health Ecosystem

Use this section to describe your ecosystem map and share significant takeaways from the mapping process. You can edit the Map Legend on the right with your nodes and lines.

### Sample Ecosystem Map Legend

- Community Health Issue
- Education Orgs
- Public Sector Orgs
- Community-based Orgs
- People & Sub-populations

#### Group-Issue Relationship

- Contributes to Issue
- Addressing the Issue
- Affected by the Issue

#### Group-Group Relationship

- Integrating
- Cooperation
- Aware of Each Other
- Coordination
- Networking
- No Relationship